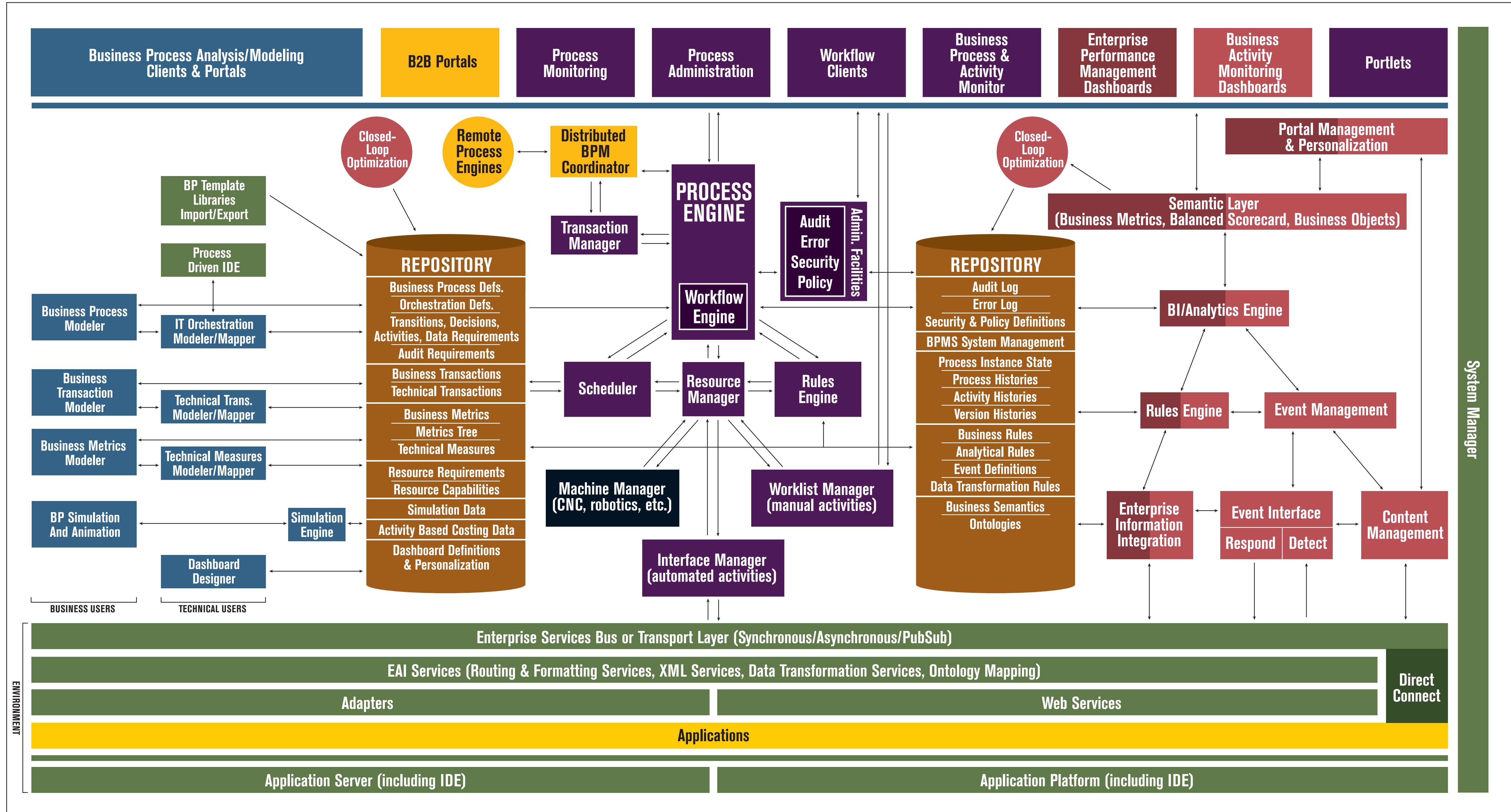


2004 BPMS Reference Architecture*



BPM Vendors

(Categorization is the broadest possible and based solely on vendor positioning. No independent analysis is implied.)

- Accent Technologies, Inc.
- Action Technologies
- Alternative Technologies
- Black Pearl, Inc.
- Anway Software
- BEA Systems
- BMC Software
- Business Objects
- Cap Gemini Ernst & Young
- Casewise
- Ceramatica, Inc.
- Clear Technology, Inc.
- ClientSoft, Inc.
- Commerce One
- CommerceQuest
- Computer Associates
- Computer Sciences Corporation
- Compuware Corporation
- Corel Corporation
- Corlicon Technologies, Inc.
- Dralsoft Inc.
- DST Systems
- edTRACK Ltd
- EDS Corporation
- eStream Technologies, Inc.
- EERO
- Epance, Inc.
- Fair Isaac
- FileNET Corporation
- Fianco
- Fuego
- Fujitsu Software
- Global eXchange Services
- glue:td
- HandySoft
- Hyperion
- IBM
- IDS Scheer
- Informatica Corporation
- Infosys Technologies
- Ilog
- Insession Technologies
- Intalio Inc.
- Interfacing Technologies
- International Performance Group
- iSpheres, Inc.
- Lanier Group
- Lombardi Software, Inc.
- Magic Software
- MEGA International
- MetaServer
- MetaStorm
- Microsoft
- MicroStrategy, Inc.
- Newgen Software Technologies Ltd.
- Niku Corporation
- Nobilis Software, Inc.
- NorCom Information Technology AG
- Pavilion Technologies, Inc.
- PECTRA Technology Inc.
- Pegasystems, Inc.
- PeopleSoft Inc.
- PIKOS GmbH
- Popkin Software
- ProActivity
- Proforma Corp.
- QPR Software, Inc.
- Open Text Corporation
- Oracle Corporation
- RevX Inc.
- RivCom
- SAP AG
- Sanyam Computer Services, Ltd
- SAS Institute, Inc.
- Sarvion, Inc.
- Seagull Software Systems
- SeeBeyond Technology Corp.
- Sigma Dynamics
- Siebel Systems
- Sierra Atlantic
- SL Corporation
- Sonic Software Corporation
- Staffware Corporation
- Sterling Commerce
- Sun Microsystems
- Sybase, Inc.
- TIBCO Software, Inc.
- TRANSFLOW AG
- Ultimus, Inc.
- Vignette
- Vitria Technology
- Vision Software
- W4
- webMethods Inc.
- Workplains, Ltd.
- WRQ

BPM Glossary

activity—1 BPM: a delegatable business function with specific objectives, initiation conditions, and completion conditions; 2 formal workflow research: an instance of a task with assigned resources

activity based costing—a cost management methodology focusing on allocating costs to the resource-consuming activities involved in production, and particularly adaptable to BPM

BAM (business activity monitoring)—an approach to detecting, identifying, analyzing, and responding to business events in real-time or near real-time

BPA (business process automation)—the automation of a business process

BPA/M (business process analysis and modeling)—1 a category: GUI analysis, modeling, and simulation tools; 2 a set of methodologies; 3 a market

BPO—1 business process optimization; 2 business process outsourcing

BPI (business process integration)—an application integration style or technology focusing on interconnecting the automated business functions that pertain to a particular business process

BPM (Business Process Management)—1 a process-centric approach to business management and the management of business processes; 2 a market; 3 category of products and services

BPMS (BPM System)—an integrated set of software components or products that enable BPM for both business and technical users, including facilities for BPA/M, runtime management, BAM and/or EPM for measurement and optimization

BPR (business process reengineering)—business change and optimization by replacing entire business processes using a methodology of analysis and structured redesign

business process—any interdependent and interconnected collection of management decisions and delegatable activities that jointly achieve one or more measurable objectives, possibly with multiple initiation and completion points

case—workflow: the abstract document; the object or collection of data that appears to flow

choreography—service-centric message composition and arrangement between collaborating services

cross-functional business process—a business process that crosses functional organizations

conditioned transition—workflow: a transition with an associated Boolean condition or 'gate' which serves as a case filter, often in place of explicit decision representation in a flow diagram

CPI (continuous process improvement)—incremental change and optimization of business processes to effect business change and optimization

decision—BPM: the coordination of preceding activities' effect and the determination of subsequent activities based on process state, external and internal events, and subjective management directive

EPM (enterprise performance management)—a business intelligence, analytical, and data centric approach to improving organizational performance

ESB (enterprise services bus)—a standards based, message oriented integration services layer supporting Web Services

metrics tree—derivational/computational relationships among a set of metrics represented hierarchically

ontology—a representation of the semantic relationships among data elements and business objects

orchestration—message-based composition and ordering of a group of services from one participant's perspective

PDD—process driven design and development, a style of software design and development in which control and message flows are designed and maintained graphically, rather than through code

process instance—a single execution of a business process

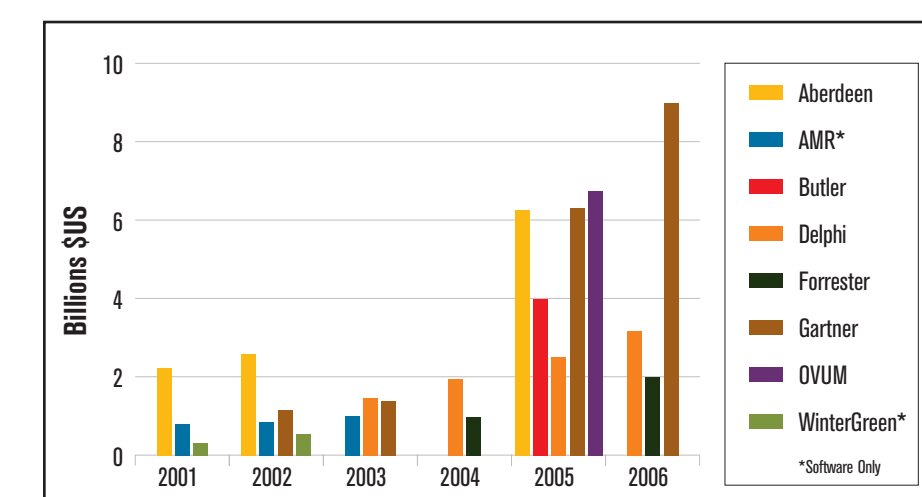
task—workflow: a business function that can modify case data

transition—in a workflow definition, a path between two tasks

workflow—a case's permissible flows through a structured, interdependent task set, controlled by case data

worklist manager—a facility that manages a list of manual activities (or their individual elements) assigned to particular human roles for a process engine and often organized by execution priority

BPM Market



Alternative Technologies

Standards

Modeling

- BPM (www.bpmi.org)
- IDEFD (www.nist.gov)
- IDEFS (www.nist.gov)
- PSL (www.nist.gov)
- UML 2.0 (www.omg.org)

Activity Monitoring

- BAMI (www.bpmi.org)

B2B

- RosettaNet (www.rosetanet.org)

Transactions

- BTP (www.caspio-open.org)
- WS-Transactions (BEA/IBM/Microsoft)

Execution Languages

- BPEL4WS (www.caspio-open.org)
- BPMIL (www.bpmi.org)
- BPSS (www.ibm.com)
- XPDL (www.wfmc.org)
- WSCI (www.w3c.org)

Process Query

- BPL (www.bpmi.org)

Audit

- BPATS (www.bpmi.org)

Vendor Categories Legend:

CATEGORY	COLOR
BPMS (with BPA/M and BAM)	Blue
BPA/M	Green
BAM or EPM	Red
ESB (with BPM capabilities)	Yellow
Services (consulting, education, system integration)	Black
Other BPM Related Products	Orange